

DEPARTMENT BAR CODE

SURVEYED

BY
TETRA TECH

DATE
DEC 2023

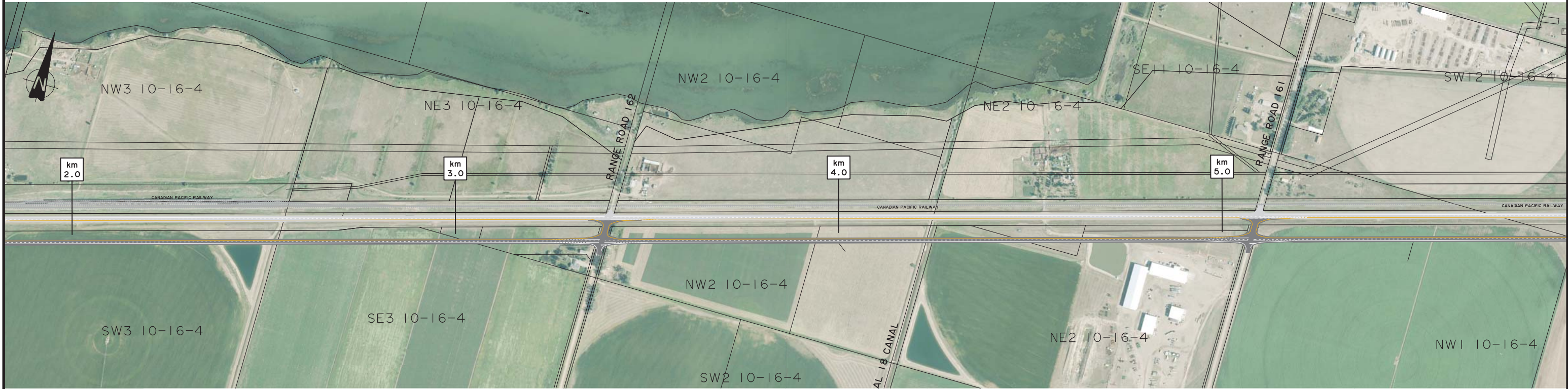
PHOTO

DESCRIPTION
PLAN AND PROFILES

CONTRACT
23425

HIGHWAY
3:12/14

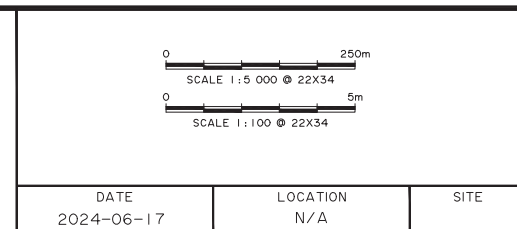
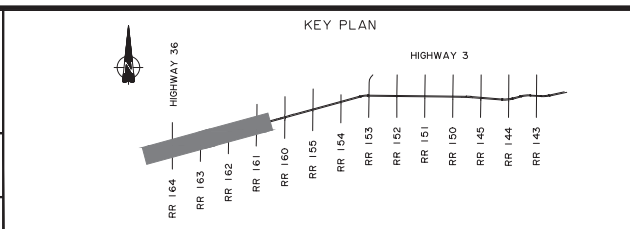
DRAWING
1



CONSULTANT

TETRA TECH

JOB No. 2023-3V29-01



Alberta Transportation and Economic Corridors

**HWY 3 TWINNING
TABER TO BURDETT
PROJECT PLAN
STA 100+000 TO STA 105+500**

DATE 2024-06-17	LOCATION N/A	SITE	CONTRACT 23425	HIGHWAY 3:12/3:14	SHEET 1 of 8	DRAWING 1
--------------------	-----------------	------	-------------------	----------------------	-----------------	--------------

DWG PATH: c:\pwworking\cam_infra\2023\29-01-14\200 project website.dwg PLOT DATE: 2024-06-17 4:38:10 PM

DEPARTMENT BAR CODE

SURVEYED

BY
TETRA TECH

DATE
DEC 2023

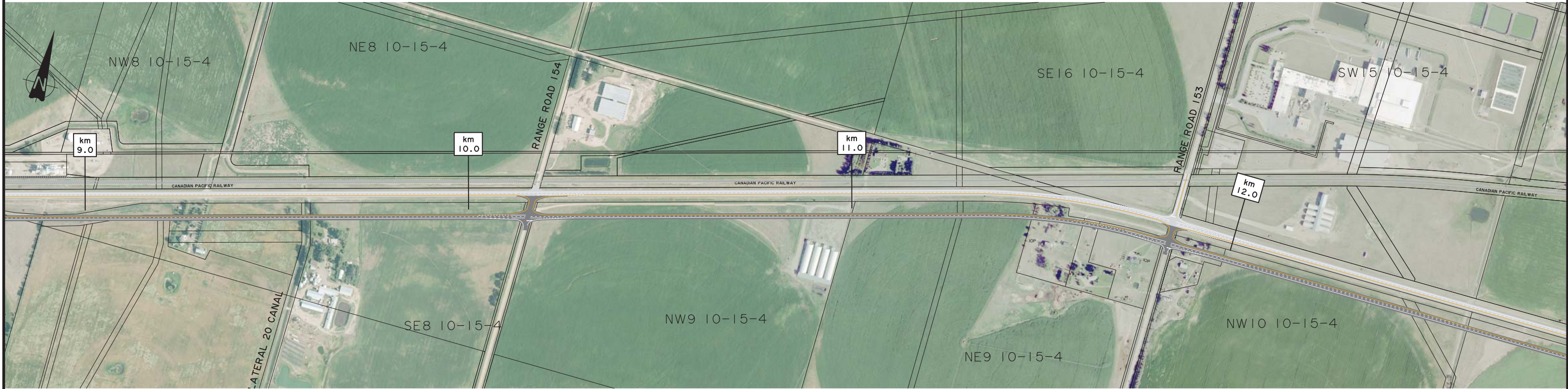
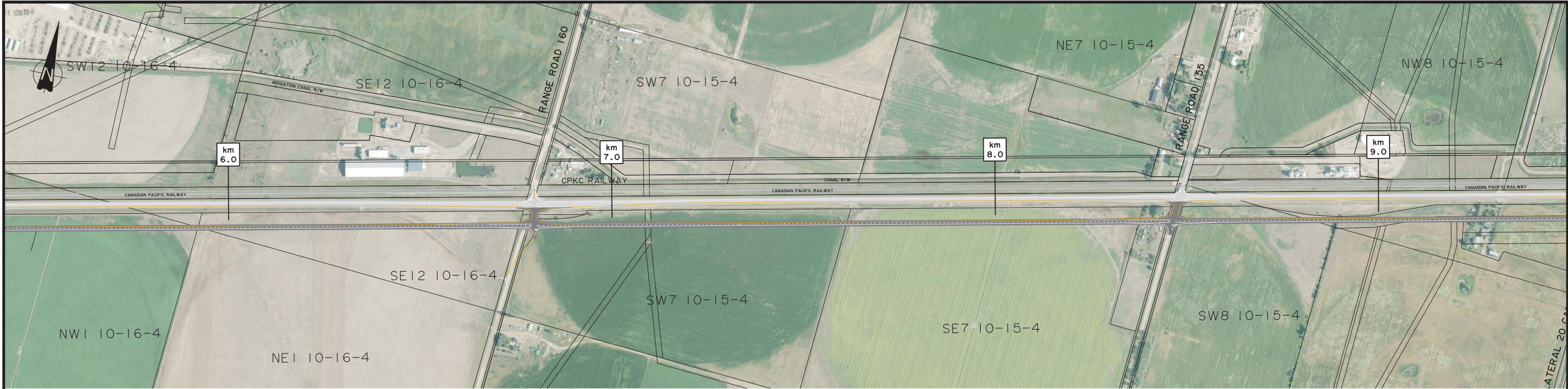
PHOTO

DESCRIPTION
PLAN AND PROFILES

CONTRACT
23425

HIGHWAY
3:12/14

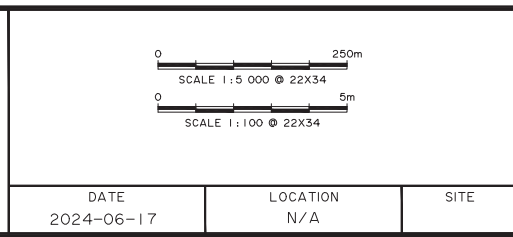
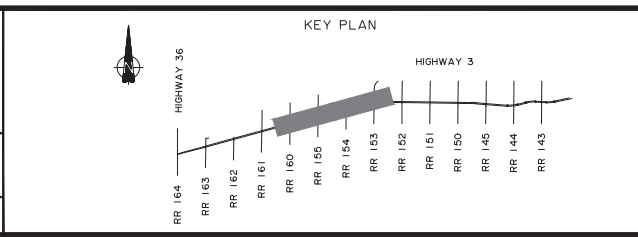
DRAWING
2



CONSULTANT

TETRA TECH

JOB No. 2023-3V29-01



Alberta Transportation and Economic Corridors

HWY 3 TWINNING
TABER TO BURDETT
PROJECT PLAN
STA 105+500 TO STA 112+500

DATE 2024-06-17	LOCATION N/A	SITE	CONTRACT 23425	HIGHWAY 3:12/3:14	SHEET 2 of 8	DRAWING 2
--------------------	-----------------	------	-------------------	----------------------	-----------------	--------------

DWG PATH: c:\pwworking\car_mifaluma\2023\3v29-01\c3200 project website.dwg PLOT DATE: 2024-06-17 4:43:29 PM

DEPARTMENT BAR CODE

SURVEYED

BY TETRA TECH

DATE DEC 2023

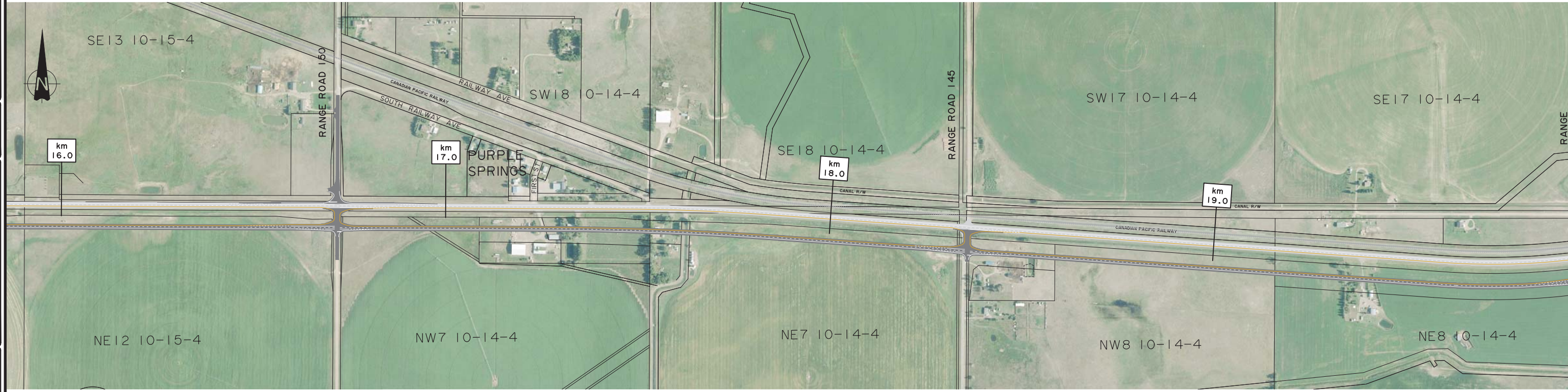
PHOTO

DESCRIPTION PLAN AND PROFILES

CONTRACT 23425

HIGHWAY 3:12/3:14

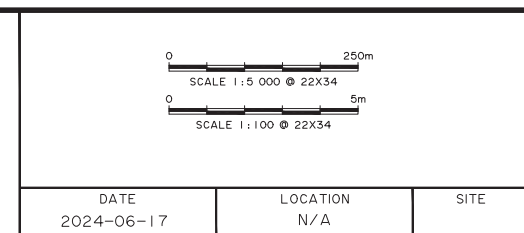
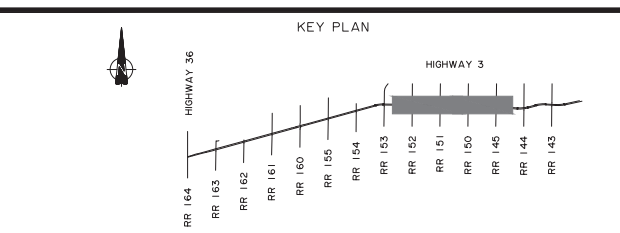
DRAWING 3



CONSULTANT

TETRA TECH

JOB No. 2023-3V29-01



Alberta Transportation and Economic Corridors

HWY 3 TWINNING
TABER TO BURDETT
PROJECT PLAN
STA 112+500 TO STA 119+500

DATE	LOCATION	SITE	CONTRACT	HIGHWAY	SHEET	DRAWING
2024-06-17	N/A		23425	3:12/3:14	3 of 8	3

DWG PATH: c:\pwworking\cam_mifaluma\2023\3V29-01-14\200 project website .dwg PLOT DATE: 2024-06-17 4:47:21 PM

DEPARTMENT BAR CODE

SURVEYED

BY
TETRA TECH

DATE
DEC 2023

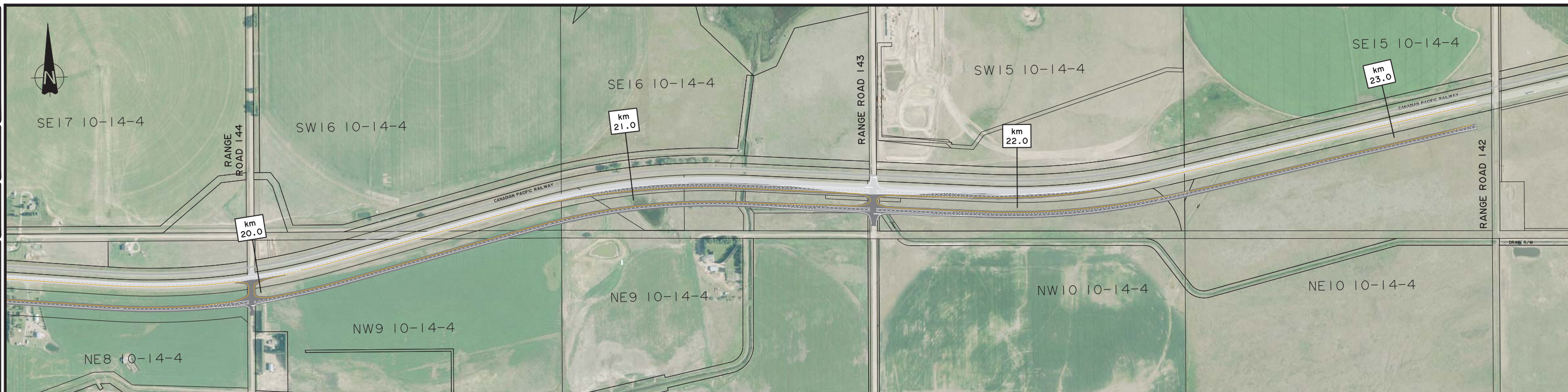
PHOTO

DESCRIPTION
PLAN AND PROFILES

CONTRACT
23425

HIGHWAY
3:12/3:14

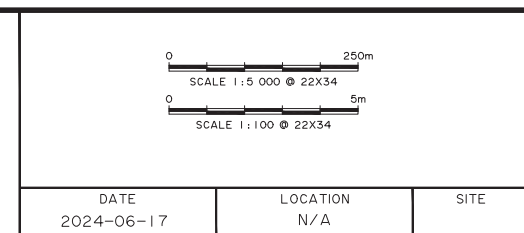
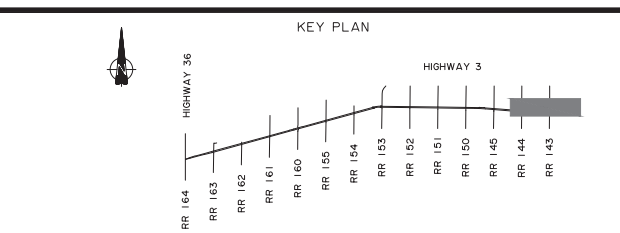
DRAWING
4



CONSULTANT

TETRA TECH

JOB No. 2023-3V29-01



Alberta Transportation and Economic Corridors

**HWY 3 TWINNING
TABER TO BURDETT
PROJECT PLAN
STA 119+500 TO STA 123+000**

DATE 2024-06-17	LOCATION N/A	SITE	CONTRACT 23425	HIGHWAY 3:12/3:14	SHEET 4 of 8	DRAWING 4
--------------------	-----------------	------	-------------------	----------------------	-----------------	--------------

DWG PATH: c:\pwworking\cam_mifaluma\2023\29-01-14\200 project website.dwg PLOT DATE: 2024-06-17 4:58:25 PM

DEPARTMENT BAR CODE

SURVEYED

BY TETRA TECH

DATE DEC 2023

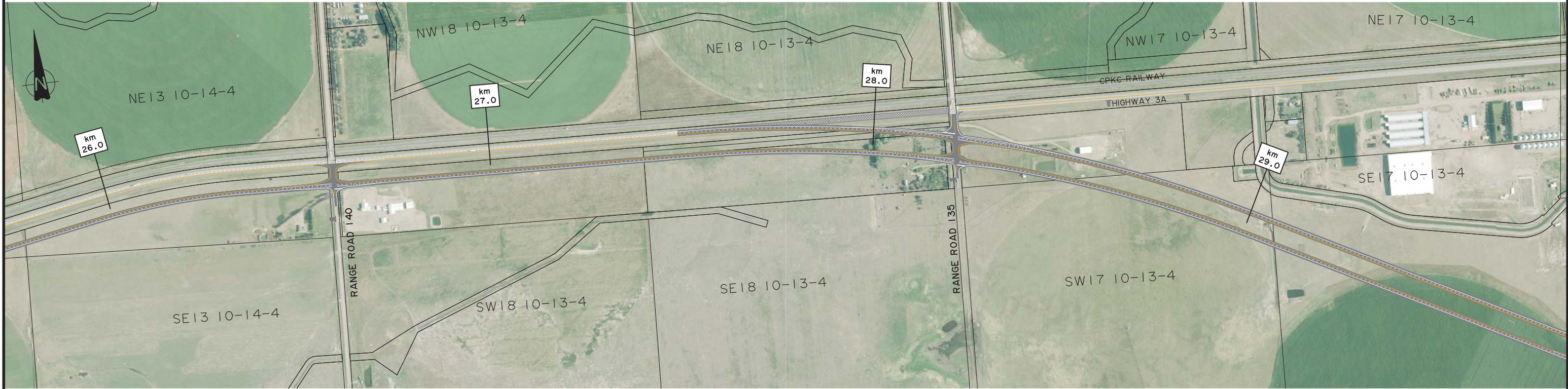
PHOTO

DESCRIPTION PLAN AND PROFILES

CONTRACT 23425

HIGHWAY 3:12/3:14

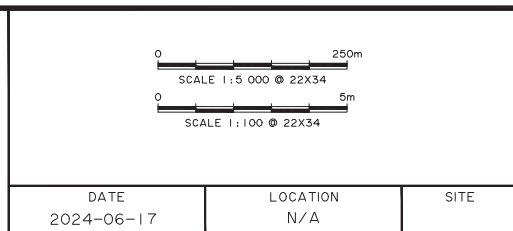
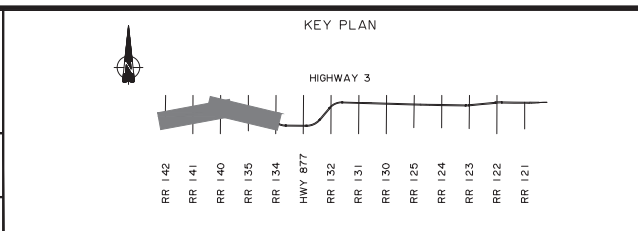
DRAWING 5



CONSULTANT

TETRA TECH

JOB No. 704-TRN.CHWY03342



Alberta Transportation and Economic Corridors

HWY 3 TWINNING
TABER TO BURDETT
PROJECT PLAN
STA 123+000 TO STA 129+500

CONTRACT 23425	HIGHWAY 3:12/3:14	SHEET 5 OF 8	DRAWING 5
----------------	-------------------	--------------	-----------

DWG PATH: c:\pwworking\cam_infra\2023\23425\project\website\figure_1142 to east.dwg PLOT DATE: 2024-06-17 5:03:32 PM

DEPARTMENT BAR CODE

SURVEYED

BY
TETRA TECH

DATE
DEC 2023

PHOTO

DESCRIPTION
PLAN AND PROFILES

CONTRACT
23425

HIGHWAY
3:12/14

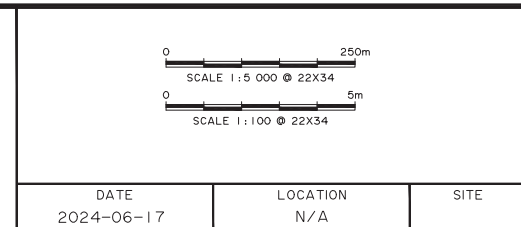
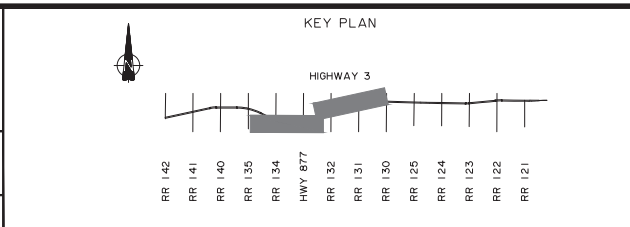
DRAWING
6



CONSULTANT

TETRA TECH

JOB No. 704-TRN.CHWY03342



Alberta Transportation and Economic Corridors

HWY 3 TWINNING
TABER TO BURDETT
PROJECT PLAN
STA 129+500 TO STA 136+500

DATE 2024-06-17	LOCATION N/A	SITE	CONTRACT 23425	HIGHWAY 3:12/3:14	SHEET 6 OF 8	DRAWING 6
--------------------	-----------------	------	-------------------	----------------------	-----------------	--------------

DWG PATH: c:\pwworking\cam_infra\2023\23425_project\website figure_1142 to east.dwg PLOT DATE: 2024-06-17 5:06:30 PM

DEPARTMENT BAR CODE

SURVEYED

BY
TETRA TECH

DATE
DEC 2023

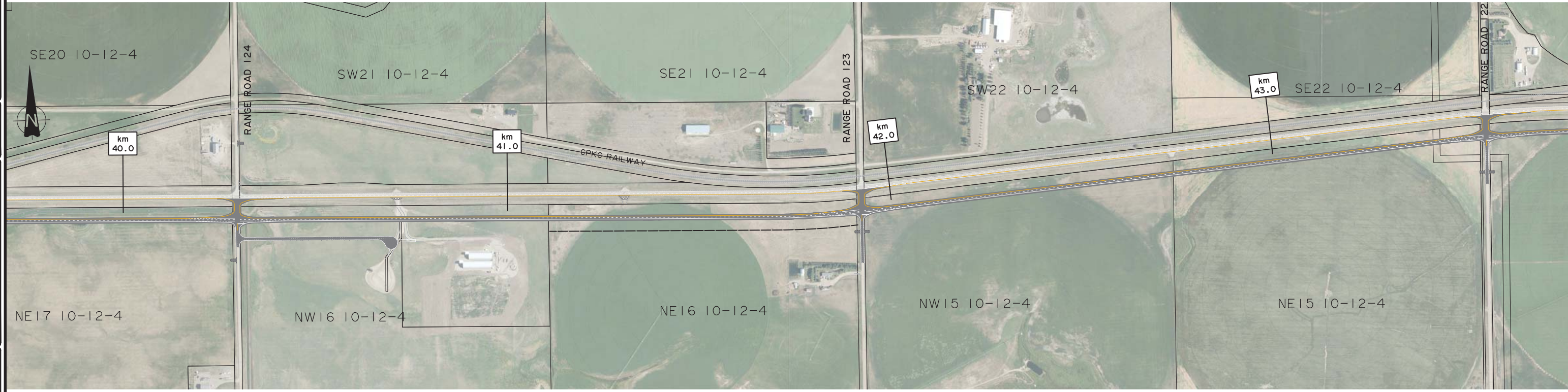
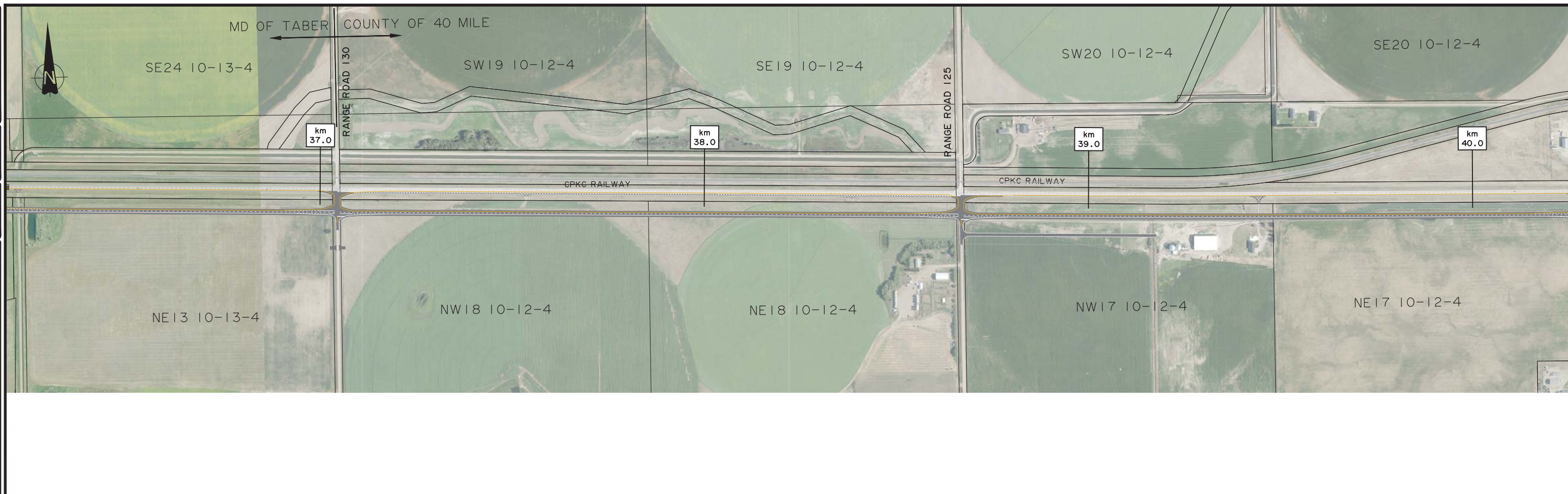
PHOTO

DESCRIPTION
PLAN AND PROFILES

CONTRACT
23425

HIGHWAY
3:12/3:14

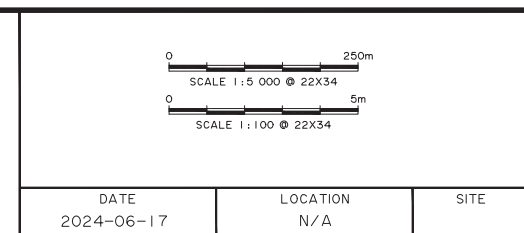
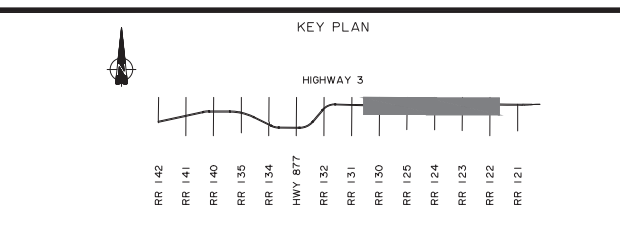
DRAWING
7



CONSULTANT

TETRA TECH

JOB No. 704-TRN.CHWY03342



Alberta Transportation and Economic Corridors

**HWY 3 TWINNING
TABER TO BURDETT
PROJECT PLAN
STA 136+500 TO STA 143+500**

DATE 2024-06-17	LOCATION N/A	SITE	CONTRACT 23425	HIGHWAY 3:12/3:14	SHEET 7 of 8	DRAWING 7
--------------------	-----------------	------	-------------------	----------------------	-----------------	--------------

DWG PATH: c:\pwworking\car_mifaluma\2023\23425_Project website figure_1142 to east.dwg PLOT DATE: 2024-06-17 5:13:14 PM

DEPARTMENT BAR CODE

BY TETRA TECH

DATE DEC 2023

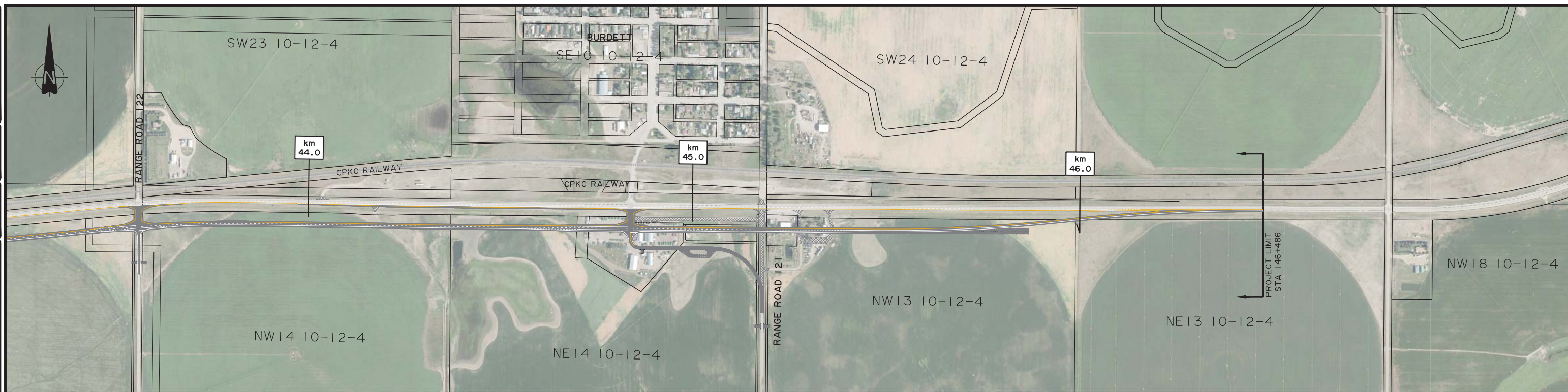
PHOTO

DESCRIPTION PLAN AND PROFILES

CONTRACT 23425

HIGHWAY 3:12/3:14

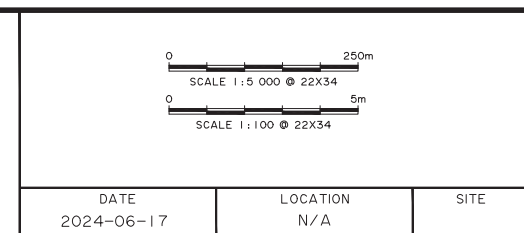
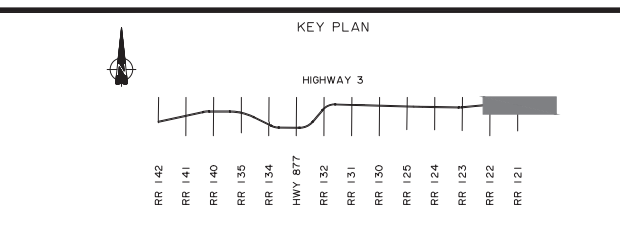
DRAWING 8



CONSULTANT

TETRA TECH

JOB No. 704-TRN.CHWY03342



HWY 3 TWINNING
TABER TO BURDETT
PROJECT PLAN
STA 143+500 TO STA 146+486

CONTRACT 23425	HIGHWAY 3:12/3:14	SHEET 8 OF 8	DRAWING 8
----------------	-------------------	--------------	-----------

DWG PATH: c:\pwworking\cam_infra\dwg\2024\23425_project\website\figure_1142_to_east.dwg PLOT DATE: 2024-06-17 5:15:20 PM